



XM3250

Reliability. Security. Productivity.



XM3250 with optional trays



This is a Class A device according to the FCC Rules and international electromagnetic emissions standards. This device is not intended for use in residential or domestic environments due to potential interference to radio communications.

Lexmark XM3250

The Lexmark XM3250 offers printing at up to 47 pages per minute (A4)*, superior print quality, enhanced security and thoughtfully engineered durability, all powered by a quad-core processor to maximise performance. An optional hard drive and optional integrated stapler add capabilities rarely found on desktop devices.



Get more done

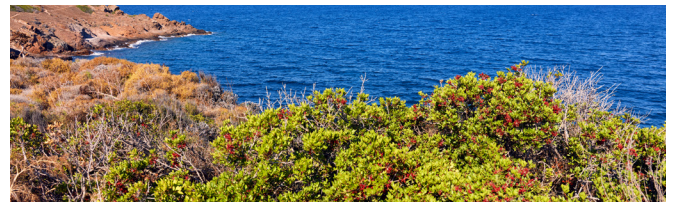
- ▶ Fax, print, copy and scan with the power of a 1.2 GHz quad-core processor, 2 GB of memory and optional hard drive.
- ▶ Get up to 47-page-per-minute printing and scan up to 100 images per minute.
- ▶ Intuitive 7-inch [17.8-cm] e-Task touch screen offers smooth, tablet-like interaction.
- ▶ Built-in productivity apps save time and improve efficiency.
- ▶ Optional integrated stapler adds finishing capabilities.

Ready when you are

- ▶ Long-life fuser and imaging components extend uptime.
- ▶ Unison™ Toner replacement cartridges deliver up to 21,000 pages** of high-quality printing.
- ▶ Maximum input capacity of 2,300 pages means fewer interruptions.
- ▶ Durable metal frame is designed for longevity.

Robust, built-in security

- ▶ Lexmark's full-spectrum security architecture helps keep your information safe—on the document, the device, over the network, and everywhere in between.
- ▶ A range of embedded features harden device against attacks.
- ▶ Go beyond standard Confidential Print with optional security solutions like Print Release.
- ▶ Keypoint Intelligence - Buyers Lab honoured Lexmark with a prestigious BLI PaceSetter award for Document Imaging Security***.



Built for planet earth

- ▶ Energy management features reduce power consumption in active use or sleep mode.
- ▶ Standard two-sided printing saves paper.
- ▶ Use of post-consumer recycled content in manufacturing saves natural resources.
- ▶ Device is rated EPEAT® Silver and ENERGY STAR® certified.
- ▶ Recycle cartridges through the award-winning Lexmark Cartridge Collection Program (LCCP).

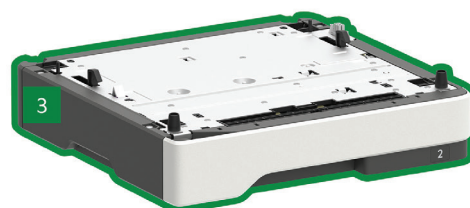
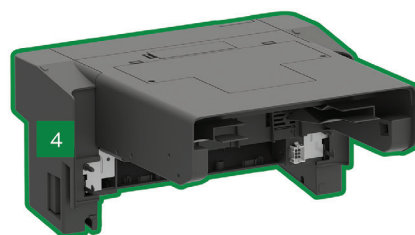
*Print and copy speeds measured in accordance with ISO/IEC 24734 and ISO/IEC 24735 respectively (ESAT). For more information see: www.lexmark.com/ISOspeeds.

**Average yield based on approximately 5% print coverage

***Award based on North America and/or Western Europe data



Lexmark XM3250



1 Multifunction product with 7-inch (17.8 cm) colour touch screen
21.5 x 19.3 x 18.8 inches
545 x 489 x 476.5 mm

2 550-sheet tray
5 x 15.7 x 14.7 inches
126 x 389 x 374 mm

3 250-sheet tray
3.7 x 15.7 x 14.7 inches
95 x 389 x 374 mm

4 Staple finisher
7.7 x 16.1 x 14.6 inches*
195 x 409 x 371.5 mm
*Adds 63.5 mm of depth to XM3250

 Standard

 Optional

Supports up to three optional trays.

© 2018 Lexmark. All rights reserved.

Lexmark, the Lexmark logo and Unison are trademarks of Lexmark International, Inc., registered in the United States and/or other countries. AirPrint and the AirPrint Logo are trademarks of Apple, Inc. ENERGY STAR® is a U.S. registered mark. EPEAT® is a trademark of EPEAT, Inc. in the United States and other countries. Google Cloud Print is a trademark of Google, Inc. MOPRIA®, the Mopria® Logo™ and the Mopria® Alliance logos are trademarks, service marks, and certification marks of Mopria Alliance, Inc. in the United States and other countries. All other trademarks are the property of their respective owners.

This product includes software developed by the OpenSSL Project for use in the Open SSL Toolkit ([http:// www.openssl.org/](http://www.openssl.org/)).



lexmark.com.au

Product specifications		Lexmark XM3250
Print		
Display	Lexmark e-Task 17.8 cm colour touch screen with audible feedback	
Print Speed: Up to ⁶	Black: 47 ppm	
Time to First Page: As fast as	Black: 6 seconds	
Print Resolution	Black: 1200 Image Quality, 1200 x 1200 dpi, 2400 Image Quality, 600 x 600 dpi	
Memory	Standard: 2048 MB / Maximum: 2048 MB	
Hard Disk	Option available	
Recommended Monthly Page Volume ²	2000 - 20000 pages	
Maximum Monthly Duty Cycle: Up to ³	175000 pages per month	
Copy		
Copy Speed: Up to ⁶	Black: 47 cpm	
Time to First Copy: as fast as	Black: 6 seconds	
Scan		
Scanner Type / ADF Scan	Flatbed scanner with ADF / DADF (single pass Duplex)	
A4/Ltr Duplex Scan Speed: Up to / Duplex Scan Speed: Up to	Black: 94 / 100 sides per minute / Colour: 60 / 64 sides per minute	
A4/Ltr Simplex Scan Speed: Up to / Scan Speed: Up to	Black: 47 / 50 sides per minute / Colour: 30 / 32 sides per minute	
ADF Paper Input Capacity: Up to	100 pages 75 gsm bond	
Fax		
Modem Speed	ITU T.30, V.34 Half-Duplex, 33.6 Kbps	
Supplies ⁷		
Laser Cartridge Yields (up to) ¹	21,000-page Cartridge	
Imaging Unit Estimated Yield: Up to	60000 pages, based on 3 average letter/A4-size pages per print job and ~ 5% coverage	
Cartridge(s) Shipping with Product ⁸	6,000-page Starter Return Program Toner Cartridge	
Paper Handling		
Included Paper Handling	550-Sheet Input, 100-Sheet Multipurpose Feeder, Integrated Duplex, 250-Sheet Output Bin	
Optional Paper Handling	250-Sheet Tray, 550-Sheet Tray, 550-Sheet Lockable Tray, Inline Stapler	
Paper Input Capacity: Up to	Standard: 650 pages 75 gsm bond / Maximum: 2300 pages 75 gsm bond	
Paper Output Capacity: Up to	Standard: 250 pages 75 gsm bond / Maximum: 250 pages 75 gsm bond	
Media Types Supported	Card Stock, Envelopes, Paper Labels, Plain Paper, Transparencies, Refer to the Paper & Specialty Media Guide	
Media Sizes Supported	10 Envelope, 7 3/4 Envelope, 9 Envelope, A4, A5, DL Envelope, Executive, Folio, JIS-B5, Legal, Letter, Statement, Universal, Oficio, A6	
General Information ⁴		
Standard Ports	One Internal Card Slot, USB 2.0 Specification Hi-Speed Certified (Type B), Gigabit Ethernet (10/100/1000), Front USB 2.0 Specification Hi-Speed Certified port (Type A), Rear USB 2.0 Specification Hi-Speed Certified port (Type A)	
Optional Network Ports / Optional Local Ports	Marknet N8372 WiFi Option / Internal RS-232C serial, Internal 1284-B Bidirectional Parallel	
Noise Level: Operating	Print: 55 dBA / Copy: 56 dBA / Scan: 55 dBA	
Specified Operating Environment	Humidity: 8 to 80% Relative Humidity, Temperature: 10 to 32°C (50 to 90°F), Altitude: 0 - 5000 meters	
Size (mm - H x W x D) / Weight	545 x 489 x 476.5 mm / 22.3 kg	

All information in this brochure is subject to change without notice. Lexmark is not liable for any errors or omissions.

This is a Class A device according to the FCC Rules and international electromagnetic emissions standards. This device is not intended for use in residential or domestic environments due to potential interference to radio communications.

¹Average yield based on approximately 5% print coverage. ²"Recommended Monthly Page Volume" is a range of pages that helps customers evaluate Lexmark's product offerings based on the average number of pages customers plan to print on the device each month. Lexmark recommends that the number of pages per month be within the stated range for optimum device performance, based on factors including: supplies replacement intervals, paper loading intervals, speed, and typical customer usage. ³"Maximum Monthly Duty Cycle" is defined as the maximum number of pages a device could deliver in a month using a multishift operation. This metric provides a comparison of robustness in relation to other Lexmark printers and MFPs. ⁴Printers are sold subject to certain license/agreement conditions. See www.lexmark.com/ printerlicense for details. ⁵Actual Yield may vary based on other factors such as device speed, paper size and feed orientation, toner coverage, tray source, percentage of black-only printing and average print job complexity. ⁶Print and copy speeds measured in accordance with ISO/IEC 24734 and ISO/IEC 24735 respectively (ESAT). For more information see: www.lexmark.com/ISOspeeds. ⁷Product functions only with replacement cartridges designed for use in a specific geographical region. See www.lexmark.com/regions for more details. ⁸Average Continuous Cartridge Yield in one-sided (simplex) mode 6,000 standard pages. Declared yield value in accordance with ISO/IEC 19752.