

DocuPrint 5105 d
A3 Monochrome Laser Printer



DocuPrint 5105 d

Speed and Productivity
The print solution that grows
with your Business



Powerful A3 printing with extensive productivity capabilities

Introducing the DocuPrint 5105 d. An A3 monochrome laser printer – providing high speed printing with ultra reliability that is ideal for high volume printing. With an extensive list of expandability options, it is the ideal solution to meet the demands of today's printing needs.

Performance and Reliability

High speed, reliable printing

With its newly designed high speed print engine, the DocuPrint 5105 d delivers a blistering 55 pages a minute¹ with ultra dependability – perfect for high volume monochrome printing applications.

¹A4 paper, 1 sided

Ready to go when you need it

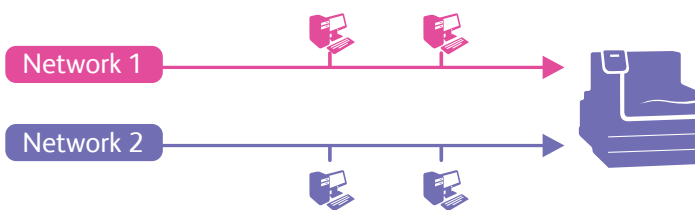
The DocuPrint 5105 d boasts a first page out time of just 2.7 seconds, making quick work of on-the spot print requests.

Warm-up time from power on is also a quick 22 seconds or less, and just 12 seconds or less from sleep mode.

High speed connection of up to 2 networks*

The DocuPrint 5105 d comes standard with hi-speed Gigabit Ethernet, enabling high-speed connection to the network.

As a first for the Fuji Xerox printer lineup, you can now connect up to 2 Ethernet networks*, meaning printing can now be performed in two completely independent network environments. Security is ensured as there is no connection between either network.



*Requires optional Secondary Ethernet kit

Quick Facts

DocuPrint 5105 d

- A3 Monochrome laser printer
- Prints up to 55ppm (A4)
- Duplex, network standard
- 2GB memory
- First page time out 2.7 seconds
- Can handle paper weight from 56gsm up to 216gsm
- Mobile print with Air print
- Paper capacity 1,095 sheets standard, maximum 5,095 sheets
- Dimensions: W 640mm x D 669mm x H 693mm

Enhanced Productivity

Versatile paper handling

A wide range of media types can be handled, ranging from 60gsm through to 216gsm. Bypass tray supports standard paper from postcard through to A3 size, plus custom paper sizes (width: 75 to 297 mm, length: 98.4 to 431.8 mm).

Paper capacities start from 1,095 sheets as standard, up to a massive 5,095* sheets.

*With optional Tandem Tray Module and HCF. Paper counts based on 80gsm paper.

Print on the go

With Apple® AirPrint™, you can print email and important office documents directly from your mobile iOS device when connected to your office Wi-Fi network, without the need to install print drivers.



AirPrint and the AirPrint logo are trademarks of Apple Inc.

Professional Finishing capability

The DocuPrint 5105 d has an array of finishing options available that delivers professional-quality document production.

Standard Function of C3 Finisher with Booklet Maker



Single Fold



Middle Fold



Saddle Staple

Optional Function of C3 Finisher with Booklet Maker when Folder Unit CD1 is added



C-Fold



Z-Fold



Z-fold Half Sheet

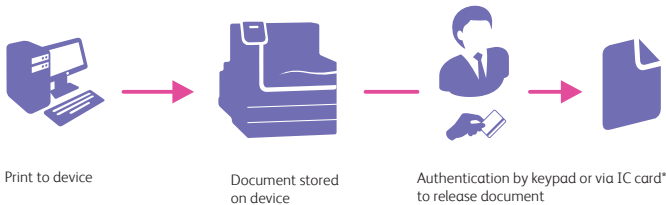


Fast and reliable A3 monochrome printing with extensive expandability options to meet your printing demands

Secure document printing

Secure Print safeguards your confidential documents

Secure Print works by storing print data in the memory of the printer or hard disk. You can then release the data to print by entering a password on the printer's keypad, or by using an IC Card*. This feature helps prevent the mix-up of documents and works well on highly confidential documents in shared print environments.



*Optional IC Card reader required

Prevent unauthorised document copying

The DocuPrint 5105 d incorporates a paper security function that allows the user to Water Mark printed documents with a copy restriction code and a Universally Unique Identifier (UUID), that restricts the document from being copied or scanned, and can also identify the print machine that was used to print the document.

Eco-friendly

Excellent TEC Value

The DocuPrint 5105 d conforms to the International Energy Star Program standards for reducing power consumption, with a TEC value of 3.6 kWh



The simplified control panel of the DocuPrint 5105 d makes on-printer operations quick and easy.

The print solution that grows with your business

The DocuPrint 5105 d has been designed with scalability in mind. As your business grows and your printing demands increase, rest assured that functionality and productivity enhancements can be easily added to meet your requirements.

- ① Tray 1 (standard) 500 sheets
- ② Tray 2 (standard) 500 sheets
- ③ Tandem Tray Module (optional)
870 sheets + 1,130 sheets
- ④ HCF (optional)
2,000 sheets
- ⑤ Folder Unit (optional)
- ⑥ C3 Finisher and Booklet Maker (optional)

* Paper counts based on 80gsm paper.

C3 Finisher or C3 Finisher with Booklet Maker requires Transport Unit H2.



DocuPrint 5105 d Specifications

Basic Function / Main Unit

Item	Description
Type	Desktop Laser
Memory Capacity	2GB (Max: 2GB)
Hard Disk Capacity	Option 160GB (Usable space)
Printing Resolution	1,200 x 1,200 dpi, 600 x 600 dpi,
Half-tone	256 Levels
Continuous Print Speed*2	Simplex A4 LEF: 55ppm, A3: 28 ppm
	Duplex A4 LEF: 50ppm, A3: 18ppm
Warm-up Time (at room temperature 20°)	22 seconds or less from Main power switch ON 12 seconds or less from low power mode
First Print Out Time (FPOT)*2	2.7 seconds or less (A4 LEF)
Network Protocol	TCP/IP (IPv4/IPv6, lpd, Port9100, IPP)
PDL	PCL, Adobe Post Script3, XPS, PDF
Connectivity	Standard 10 Base-T/100Base-TX/1000Base-T, USB2.0
	Option Secondary Ethernet kit (10 Base-T/100Base-TX), Parallel port
Paper size	Standard Tray1/2: A3, B4, A4, B5, A5, legal, Letter, Custom paper size(W 140 - 297mm x L 182 - 431.8mm) Bypass Tray: A3, B4, A4, B5, A5, legal, Letter, 11 x 17", Envelope (120 x 235 mm), Custom paper size (W 89 - 297 mm x L 98.4 - 431.8 mm, W 297 mm x L 432 mm)
	Optional 2 Tray module: A3, B4, A4, B5, A5, legal, Letter, Custom paper size (W 140 - 297mm x L 182 - 431.8mm) Tandem Tray module: A4, B5, Letter HCF: A4, B5, Letter
	In Duplex A3, B4, A4, B5, A5, legal, Letter, Custom paper size (W 128 - 297mm x L 182 - 432 mm)
Paper Weight*3	Standard Tray1: 60-105 gsm Tray2: 60-216 gsm Bypass Tray: 60-216 gsm
	Optional 2 Tray module: 60-216 gsm Tandem Tray module: 60-216 gsm HCF: 56-216 gsm
	In Duplex 60-105 gsm
Paper Tray Capacity	Standard Tray1: 500 sheets + Tray2: 500 sheets, Bypass tray: 95 sheets = 1,095 sheets
	Optional 2 Tray module(Tray 3 & 4): 500x 2 = 1,000 sheets TTM: 870 + 1130 = 2,000 sheets HCF: 2,000 sheets
	Max. 5,095 sheets (Standard trays + Bypass tray + TTM+ HCF)
Detect remaining paper	0%, 25%, 50%, 75%, 100% (Available for Tray1-4, HCF)
Output Tray Capacity*5	Standard Centre Tray: 500 sheets (A4)
	Option Centre Tray & Exit 2 tray (Option): 250 sheets for each. 500 sheets total
Operating System*6	Windows Windows Server® 2003 (32bit), Windows Vista® (32bit), Windows Server® 2008 (32bit), Windows® 7 (32bit), Windows® 8 (32bit), Windows® 8.1 (32bit), Windows Server® 2003 (64bit), Windows Vista® (64bit), Windows Server® 2008 (64bit), Windows Server® 2008 R2 (64bit), Windows® 7 (64bit), Windows® 8 (64bit), Windows® 8.1 (64bit), Windows Server® 2012 (64bit), Windows Server® 2012 R2(64bit)
	Mac Mac OS X 10.5/10.6/10.7/10.8/10.9/10.10
Power Source	AC220-240V +/- 10%, 15A, 50/60Hz common, AC110V +/- 10%, 15A, 60Hz common
Power Consumption	Printing: 1,300w, Ready: 120w, Deep sleep: 2w
Operating Environment	Operating: 10°C - 32°C, Relative Humidity: 15% - 85%
Machine Life	5 years or 3,000 k PV
Monthly Duty Cycle	200,000 pages
Dimensions	W 640 x D 669x H 693 mm
Weight	54kg (w/o Toner cartridge)

*1: Print speed may be reduced due to image quality adjustment. The performance may be reduced depending on the paper type. *2: The values may vary depending on the machine configuration. *3: The use of paper recommended by Fuji Xerox is suggested. Printing may not be performed correctly depending on the configurations. *4: When using 80 gsm paper. *5: When using 64 gsm paper *6: Please refer official website for the latest supported OS information.

Notes

- 1) If the storage media (such as hard disk drives) of the base unit fail, loss of received data, accumulated data, registered setting data, etc. may occur. In no event shall Fuji Xerox be liable for any damages whatsoever arising from loss of data.
- 2) Functional spare parts will be available for at least 7 years after the product is no longer manufactured.
- 3) The product specifications, appearance and other details in this catalog are subject to change without notice for improvements.

Other company names or product names are registered trademarks or trademarks of each company.

Reproduction Prohibitions Please note that reproduction of the following is prohibited by law: Domestic and foreign currencies, government-issued securities, and national bonds and local bond certificates. Unused postage stamps, post cards, etc. Certificate stamps stipulated by law. Reproducing works forming the subject matter of copyright (literary works, musical works, paintings, engravings, maps, cinematographic works, drawings, photographic works, etc.) is not permitted unless the reproduction is for the purpose of personal use, family use or other similar uses within a limited circle.

Accessories

Item	Code	Capacity
Exit2 Tray	E3300198	-
HDD Extension Kit	E3300197	-
Security Extension Kit	E3300203	-
Multi Language Font Kit	EC101145	-
Two Tray Module (Tray 3 & 4)	EL200969	1,000 sheets *1
Tandem Tray Module (Tray 3 & 4)	EL200970	2,000 sheets *1
High Capacity Feeder (HCF)	QC100123	2,000 sheets *1
Secondary Ethernet kit	EL201151	-
Parallel Port Kit	EC102449	-
IC Card Reader for MIFAIR	E9100123	-
IC Card Reader for HID Prox	E9100124	-
IC Card Reader	E9100100	-
Authentication Controller	E9100122	-
AC Adaptor for Authentication Controller	E9100126	-
Embedded IC Card Reader (for Felica)	E3300207	-
Embedded IC Card Reader (for HID)	E3300208	-
Finisher C3	QD200084	-
Finisher C3 with Booklet maker	QD200085	-
Transport Unit H2 for Finisher C3	QL200091	-
Folder Unit CD1	QC100122	-
65 Sheets Staple Unit for Finisher C3	EC102678	-
Punch Unit 2H/4H CD1	EC102445	-
Punch Unit US 2H/3H CD1	EC102446	-
Attention Light II	EC100639	-
User guide Holder	EC102239	-

*1: Capacity based on 80gsm paper.

Consumables

Item	Code	Yield
Toner Cartridge - Std Capacity (K)*1	CT202338	15,000
Toner Cartridge - High Capacity (K)*1	CT202337	30,000
Toner Cartridge - High Capacity MPS (K)*1	CT202339	30,000
Drum Cartridge	CT351059	57,000
Staple Cartridge Types XE (2PCS) for 50 sheet	CWAA0856	-
Staple Cartridge Types XH (3PCS) for 65 sheet	CWAA0855	-
Fusing Unit(220V)	E3300206	300,000

*1: Average standard pages. Declared Yield in accordance with ISO/IEC 19752. Yield will vary based on image, area coverage and media used.



For Your Safety

Before using the product, read the Instruction Manual carefully for proper use. Use the product with the power source and voltage specified. Be sure to establish ground connection. Otherwise, electronic shock may result in the case of a failure or short circuit.

For more information or detailed product specification, please call or visit us at

Fuji Xerox Asia Pacific Pte Ltd

14a Rodborough Road Frenchs Forest NSW 2086

Australia 1300 793 769

New Zealand 0800 993 769

www.fujixeroxprinters.com.au

www.fujixeroxprinters.co.nz

